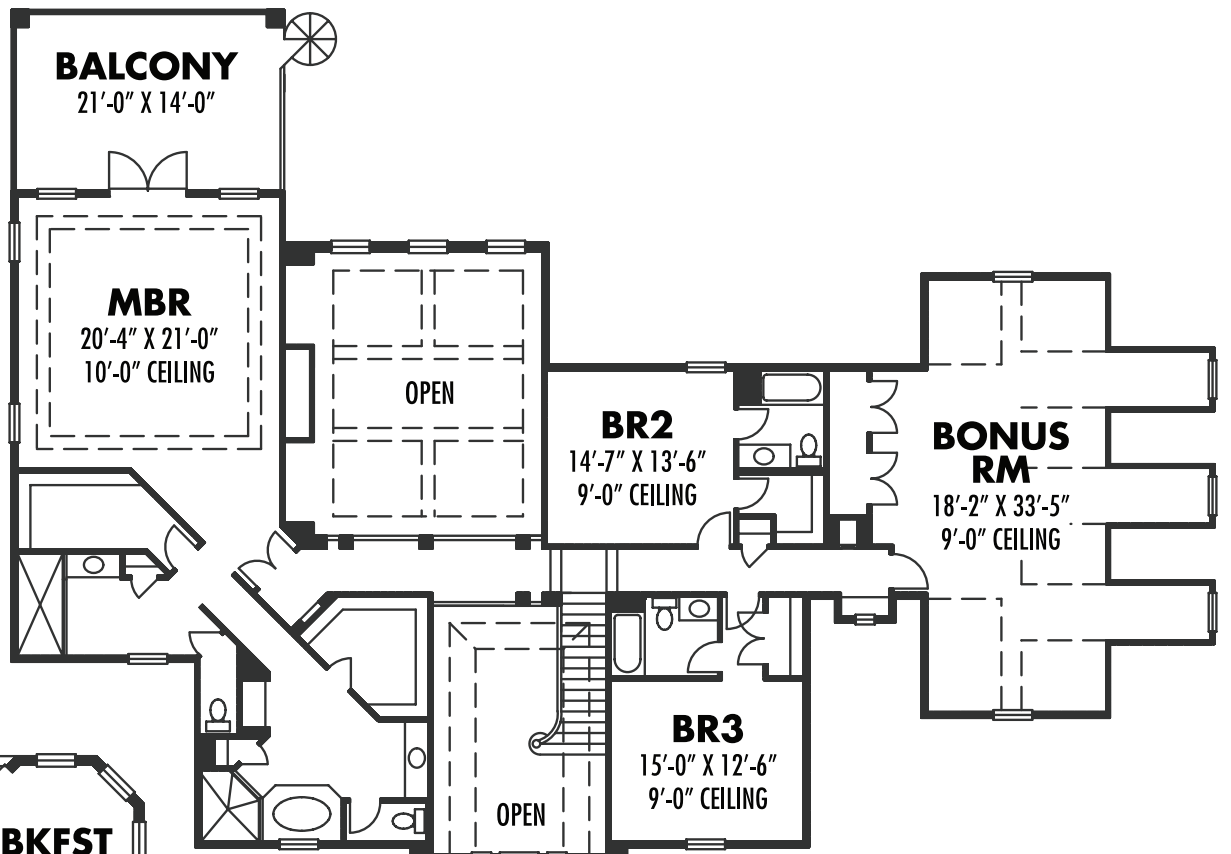
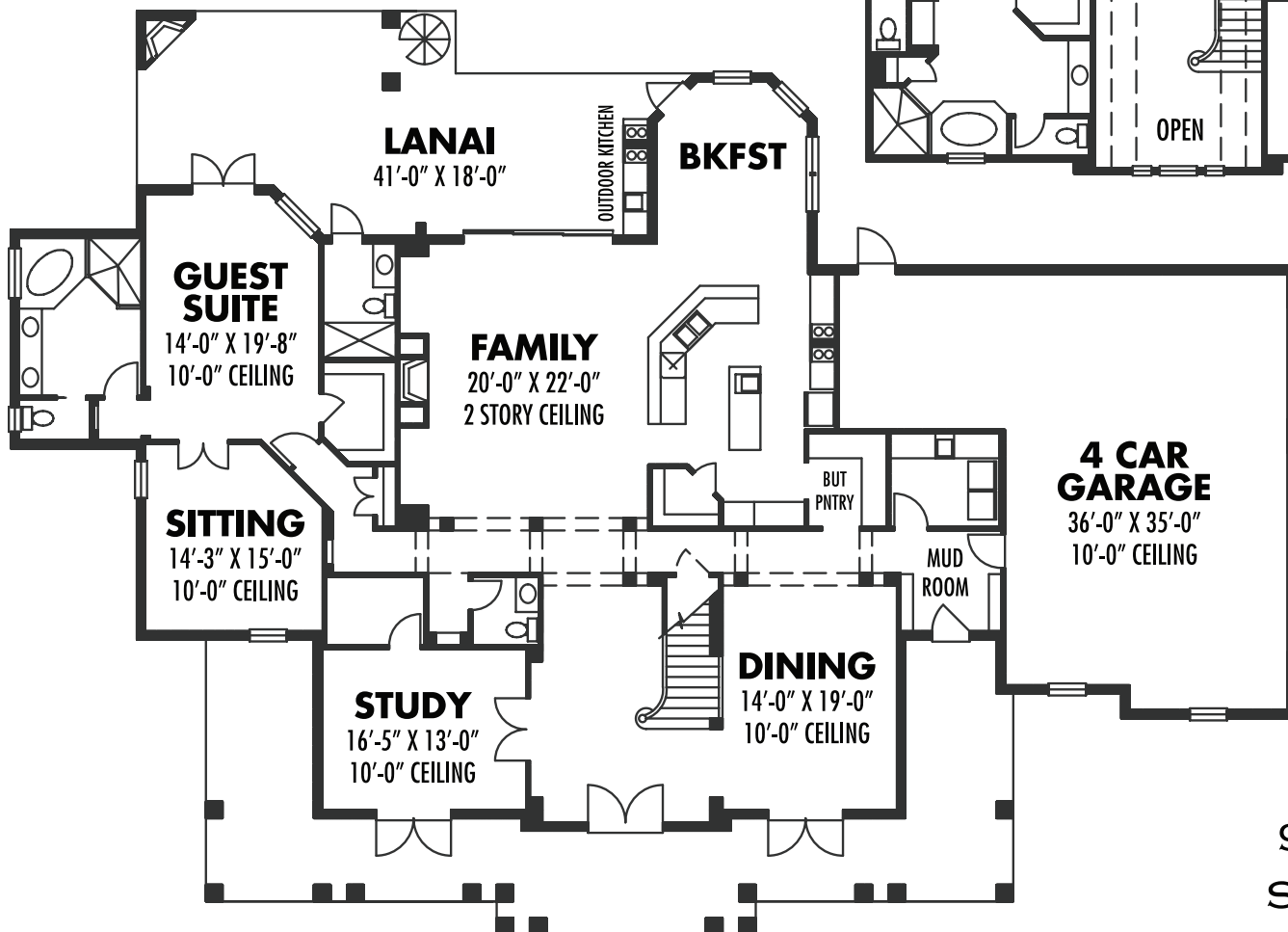




UPPER FLOOR PLAN



MAIN FLOOR PLAN



PLAN 4999
 4999 SQUARE FEET
 (BONUS RM ADDS
 817 SQ FT)
 103'-2" X 74'-1"
 10'-0" MAIN /
 9'-0" UPPER CEILINGS
 STEMWALL FOUNDATION